



**WALKER**  
H O M E S

DORMERWOODS

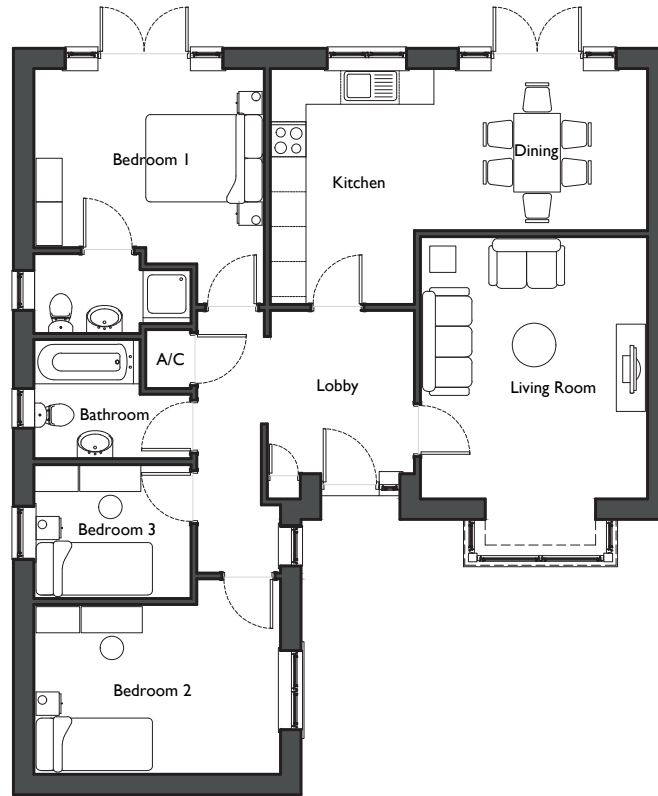


The Winfield

Three Bedroom Detached Bungalow

# The Winfield Three Bedroom Detached Bungalow

- High specification
- Modern attractive detached bungalow
- Generous accommodation
- Granite work surfaces
- Three bedrooms
- Kitchen diner with French doors to garden
- Master bedroom with ensuite
- Detached double garage
- Landscaped gardens
- Floor area 105 sqm



Ground Floor		
Entrance Hallway	12'1 x 9'8	3.7 x 3.0m
Living Room	13'1 x 8'2	4.0 x 2.5m
Dining Kitchen	13'7 x 9'5	4.2 x 2.9m
Bedroom One	13'1 x 10'8	4.0 x 3.3m
Bedroom Two	9'5 x 13'7	2.9 x 4.2m
Bedroom Three	7'8 x 8'8	2.4 x 2.7m
Bathroom	6'5 x 8'8	2.0 x 2.7m
Ensuite	8'5 x 4'9	2.6 x 1.5m
Storage & AC	2'9 x 2'3	0.9 x 0.7m

(Approximate dimensions)

All images are for illustrative purposes. These are the dimensions given are illustrative for this house type and individual properties may differ. Please check with your Sales Advisor in respect of individual properties. We give maximum dimensions within each room which includes areas of fixtures and fittings including fitted furniture. These dimensions should not be used for carpet and flooring sizes, appliance spaces or items of furniture. All images, photographs and dimensions are not intended to be relied upon for, nor to form part of, any contract unless specifically incorporated in writing into the contract.