



WALKER
HOMES

DORMERWOODS

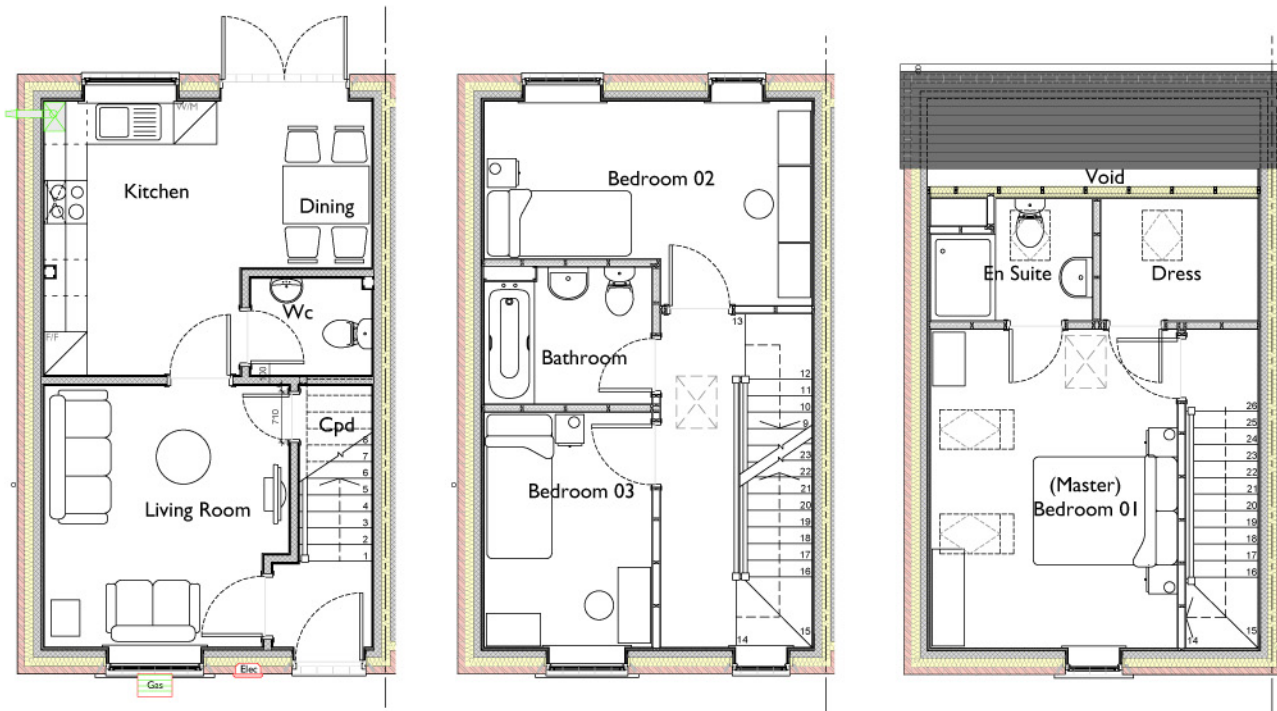


The Sycamore

Three Bedroom, Three Storey End Town House

The Sycamore Three Bedroom, Three Storey End Town House

- Delightful family accommodation
- Set over three floors
- Three bedrooms
- End town house
- Master bedroom with ensuite and dressing room
- Open and light dining kitchen
- Ground floor W.C.



Ground Floor

Entrance Hallway		
Lounge	12'10 x 11'10	3.9 x 3.6m
Inner Lobby		
W.C.	5'7 x 4'3	1.7m x 1.3m
Dining Kitchen	14'9 x 12'6	4.5 x 3.8m

First Floor

Landing		
Bedroom Two	14'9 x 7'3	4.5 x 2.2m
Bedroom Three	10'6 x 7'7	2.3 x 1.9m
Bathroom	7'7 x 5'7	2.3 x 1.9m

Second Floor

Landing		
Bedroom One	14'5 x 11'2	4.4 x 3.4m
En Suite	7'3 x 3'7	2.2 x 1.7m
Dressing Room	7'3 x 3'7	2.2 x 1.7m

(Approximate dimensions)

All images are for illustrative purposes. These are the dimensions given are illustrative for this house type and individual properties may differ. Please check with your Sales Advisor in respect of individual properties. We give maximum dimensions within each room which includes areas of fixtures and fittings including fitted furniture. These dimensions should not be used for carpet and flooring sizes, appliance spaces or items of furniture. All images, photographs and dimensions are not intended to be relied upon for, nor to form part of, any contract unless specifically incorporated in writing into the contract.