



WALKER
HOMES

DORMERWOODS

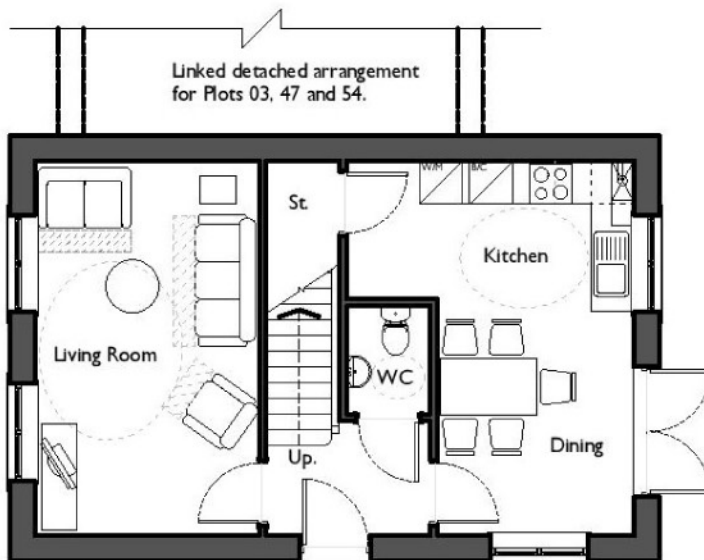


The Sherwood

Three Bedroom Link Home

The Sherwood Three Bedroom Link Home

- Three generous bedrooms
- Attractive open 'L' shaped dining kitchen
- Lounge bring in much open light
- Delightful design
- French doors from the dining room
- Central entrance hallway
- Stunning family accommodation



N.B Plots 03 & 54 mirrored.

Ground Floor		
Entrance Hallway		
W.C.	4'11 x 3'7	1.5 x 1.10m
Lounge	17'1 x 9'10	5.20 x 3.0m
Dining Area	8'10 x 7'10	2.70 x 2.40m
Kitchen	13'1 x 9'2	4.0 x 2.80m



First Floor		
Landing		
Bedroom One	10'10 x 9'10	3.30 x 3.0m
Bedroom Two	10'2 x 8'10	3.1 x 2.7m
Bedroom Three	10'2 x 7'10	3.1 x 2.4m
Bathroom	6'7 x 5'7	2.0 x 1.7m

(Approximate dimensions)

All images are for illustrative purposes. These are the dimensions given are illustrative for this house type and individual properties may differ. Please check with your Sales Advisor in respect of individual properties. We give maximum dimensions within each room which includes areas of fixtures and fittings including fitted furniture. These dimensions should not be used for carpet and flooring sizes, appliance spaces or items of furniture. All images, photographs and dimensions are not intended to be relied upon for, nor to form part of, any contract unless specifically incorporated in writing into the contract.