



**WALKER**  
HOMES

DORMERWOODS



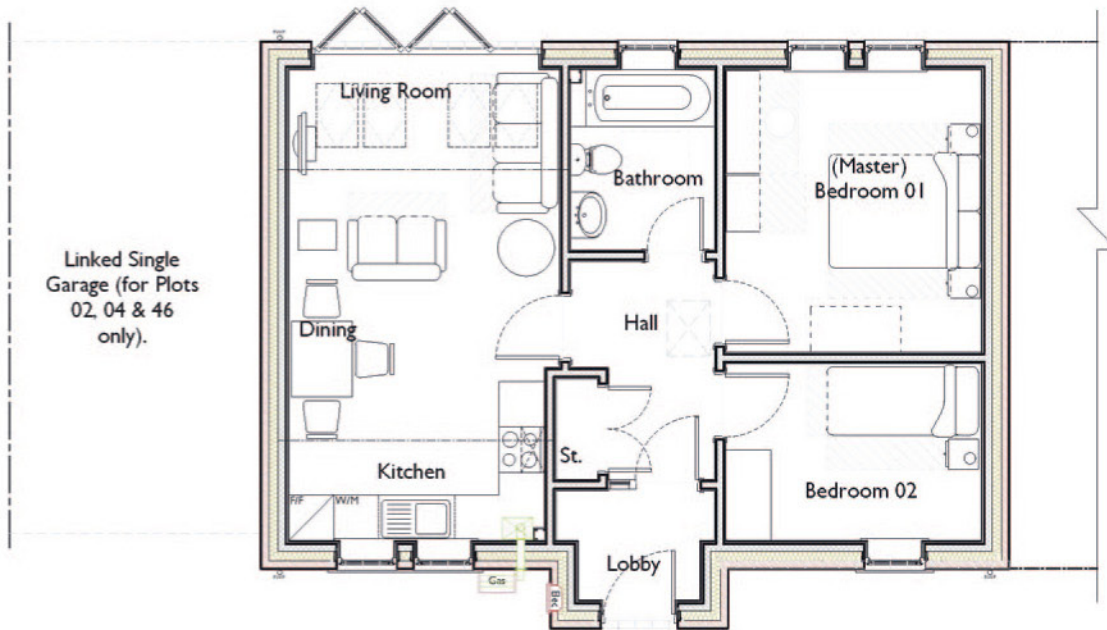
The Priory

Two Bedroom, Semi Detached Bungalow

# The Prioory

## Two Bedroom, Semi Detached Bungalow

- Beautifully designed semi detached bungalow
- Two bedrooms
- Open plan lounge/dining and kitchen
- Driveway
- Garage
- Lobby and entrance hallway
- Lounge to the rear overlooking the rear garden



### Ground Floor

Entrance Hallway		
Lounge/Dining	14'1 x 11'6	4.3 x 3.5m
Kitchen	10'10 x 6'11	3.3 x 2.1m
Bedroom One	12'2 x 10'10	3.7 x 3.3m
Bedroom Two	10'10 x 7'7	3.3 x 2.3m
Bathroom	7'10 x 6'3	2.4 x 1.9m

(Approximate dimensions)

All images are for illustrative purposes. These are the dimensions given are illustrative for this house type and individual properties may differ. Please check with your Sales Advisor in respect of individual properties. We give maximum dimensions within each room which includes areas of fixtures and fittings including fitted furniture. These dimensions should not be used for carpet and flooring sizes, appliance spaces or items of furniture. All images, photographs and dimensions are not intended to be relied upon for, nor to form part of, any contract unless specifically incorporated in writing into the contract.