



**WALKER**  
HOMES

DORMERWOODS



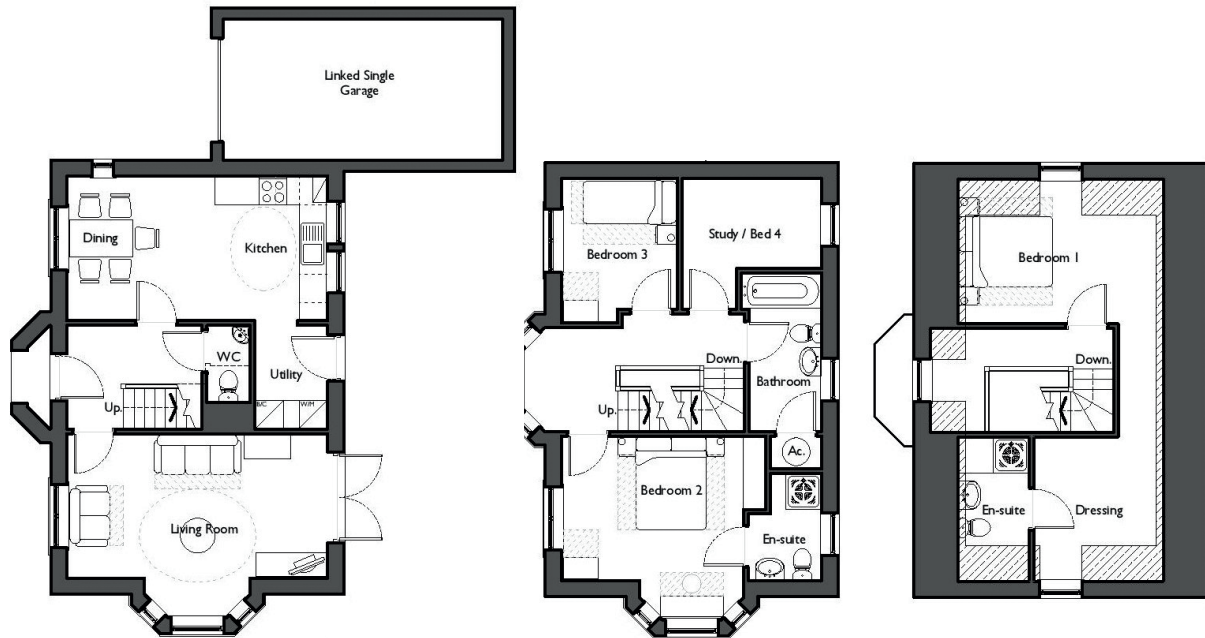
The Rufford

Four Bedroom, Three Storey Detached House

# The Rufford

Four Bedroom, Three Storey Detached House

- Most attractive family home
- Generous accommodation over three floors
- Four bedroom detached
- Three bathrooms
- Driveway and attached garage
- French doors from the lounge
- Charming side feature bay
- Bedroom one with en suite and dressing room



## Ground Floor

Entrance Hallway

W.C.	7'3 x 2'11	2.2 x 0.9m
Lounge	18'8 x 13'1	5.7 x 4.0m
Dining Kitchen	19'8 x 10'2	6.0 x 3.1m
Utility	7'3 x 5'7	2.2 x 1.7m

## First Floor

Landing

Bedroom Two	13'9 x 12'10	4.2 x 3.9m
En Suite	5'3 x 4'7	1.6 x 1.4m
Bedroom Three	9'10 x 7'10	3.0 x 2.4m
Bedroom Four	10'2 x 10'2	3.1 x 3.1m
Bathroom	10'2 x 5'7	3.1 x 1.7m

## Second Floor

Landing

Bedroom One	15'1 x 10'6	4.6 x 3.2m
En Suite	10'2 x 3'3	3.1 x 1.0m
Dressing	10'2 x 9'6	3.1 x 2.9m

(Approximate dimensions)

All images are for illustrative purposes. These are the dimensions given are illustrative for this house type and individual properties may differ. Please check with your Sales Advisor in respect of individual properties. We give maximum dimensions within each room which includes areas of fixtures and fittings including fitted furniture. These dimensions should not be used for carpet and flooring sizes, appliance spaces or items of furniture. All images, photographs and dimensions are not intended to be relied upon for, nor to form part of, any contract unless specifically incorporated in writing into the contract.